

EASY GLASS[®]
GLASS ADAPTER
MOD 4747

Testing conducted by/at:

Q-railing Europe GmbH & Co.KG

Marie-Curie-Strasse 8-14

46446 Emmerich am Rhein

Germany

1. Introduction

This report describes tests conducted at the test site of Q-railing Europe GmbH & Co.KG on Easy Glass® Glass adapter MOD 4747, assembled with various dimensions as shown.

2. Test arrangement

Various barrier specimens were mounted on to a rigid concrete structure with a test rig from steel with sufficient strength to withstand loads applied to it.

For each test, load was applied to the glass in a hand railing height.

Load was measured with a load cell.

Mechanical indicators were used to measure the deflection of the barrier from its neutral position.

3. Materials

1. Glass adapter

Article-No.: 14.4747.300.12 Glass adapter square 50x50 mm

2. Inlay

Silicone rubber, transparent

3. Glass

8,76 mm (4-0,76-4 mm) laminated glass

13,52 mm (6-1,52-6 mm) laminated glass

21,52 mm (10-1,52-10 mm) laminated glass

Technical Report

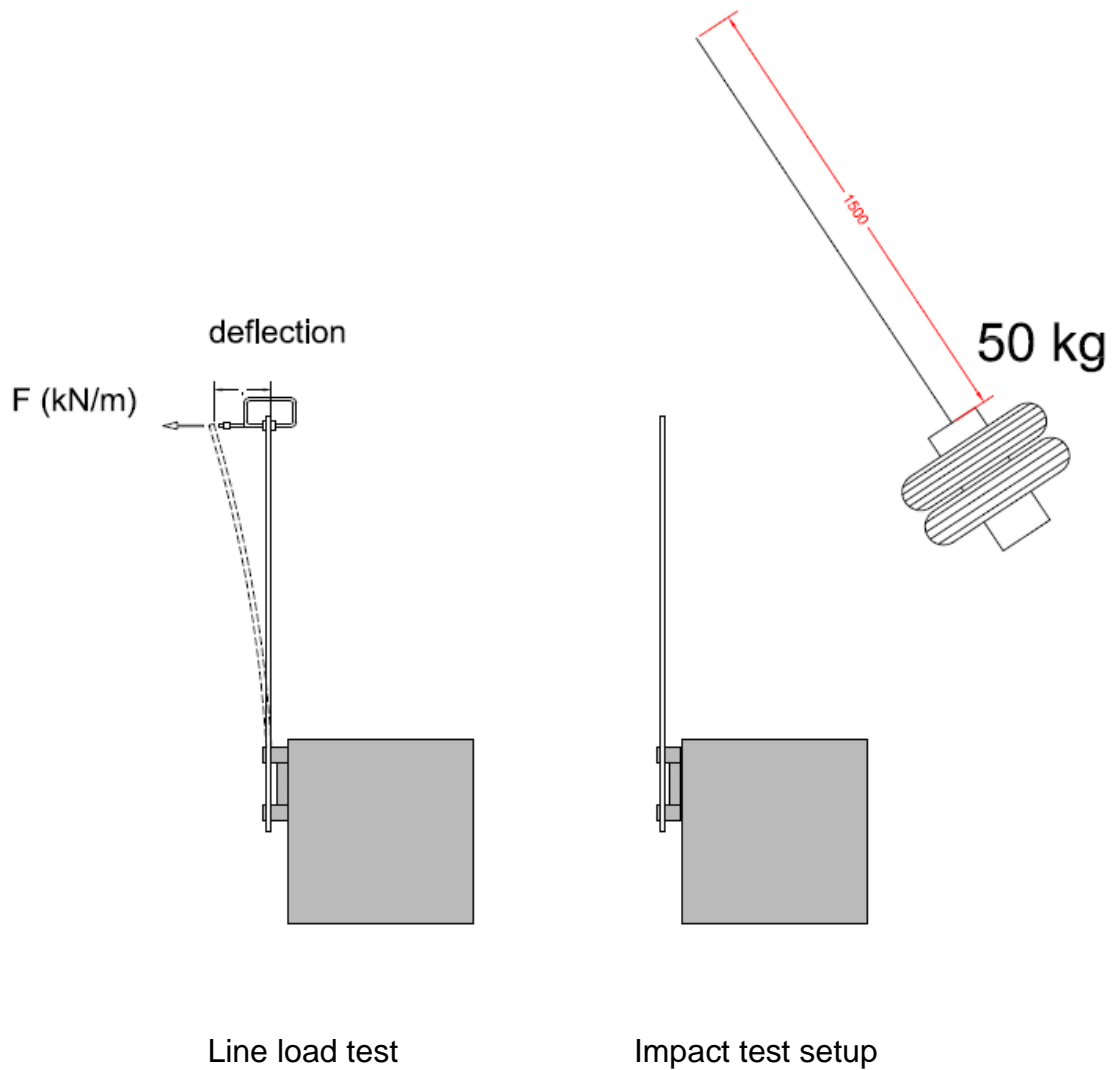
EASY GLASS® Glass adapter
MOD 4747

Report date: 17.05.2013

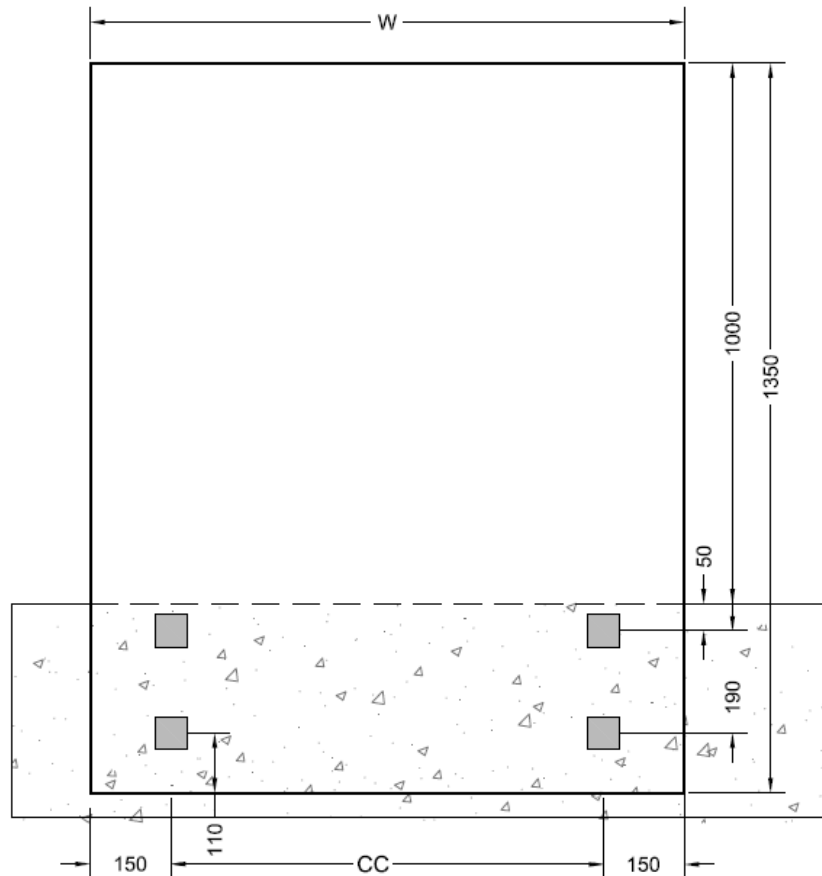
Q-railing GmbH & Co. KG

Marie-Curie-Straße 8-14 | D-46446 | Emmerich am Rhein | Germany
T +49 (0) 2822-91569-0 | F +49 (0) 2822-91569-70
E sales@q-railing.de | www.q-railing.com

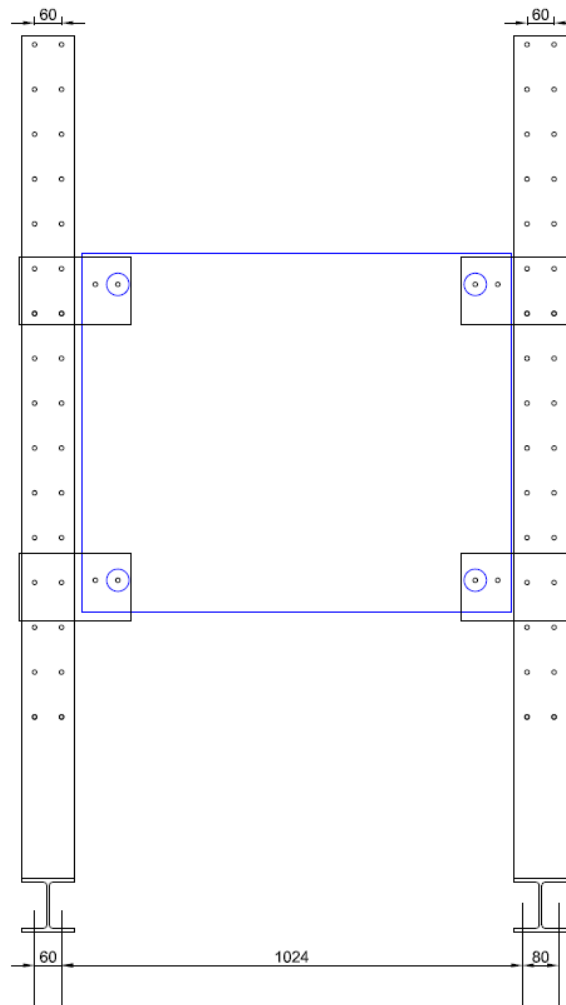
4. Arrangement of the test assembly



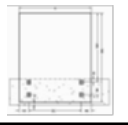
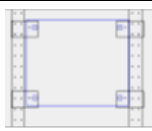
Test assembly 1



Test assembly 2 - Juliette balcony -



5. Test results

Test assembly	Glass t mm	Dimension w x h mm	Adapter distance mm	Barrier height mm	Line Load						Pendulum test		Test assembly
					0,36 kN/m	0,50 kN/m	0,74 kN/m	1,00 kN/m	1,50 kN/m	2,00 kN/m	Fall height		
					deflection mm (at 1.1 m height)						450	700	
1	21,52	1100x1350	800	1000	7,30	10,95	17,20	23,80	36,50	48,50	-	-	
	21,52	1500x1350	1200	1000	8,7	13,1	21,2	28,2	42,2	-	-		
2	8,76	900x800	740		-	-	2,50	-	-	-	-	-	
	8,76	1200x800	1040		-	-	4,80	-	-	-	-	-	
	13,52	1200x800	1040		-	-	3,20	-	-	-	passed	-	

Comments

The line load was applied to the top of the glass (=1.0 m) for the free glass and at the height of the glass for the Juliette balcony.

With test assembly 2 the impact test only needs to be done with a fall height of 450 mm. There is no demand on a fall height of 700 mm.

6. General overview

Line load test & impact test



Technical Report
EASY GLASS® Glass adapter
MOD 4747
Report date: 17.05.2013

Q-railing GmbH & Co. KG
Marie-Curie-Straße 8-14 | D-46446 | Emmerich am Rhein | Germany
T +49 (0) 2822-91569-0 | F +49 (0) 2822-91569-70
E sales@q-railing.de | www.q-railing.com